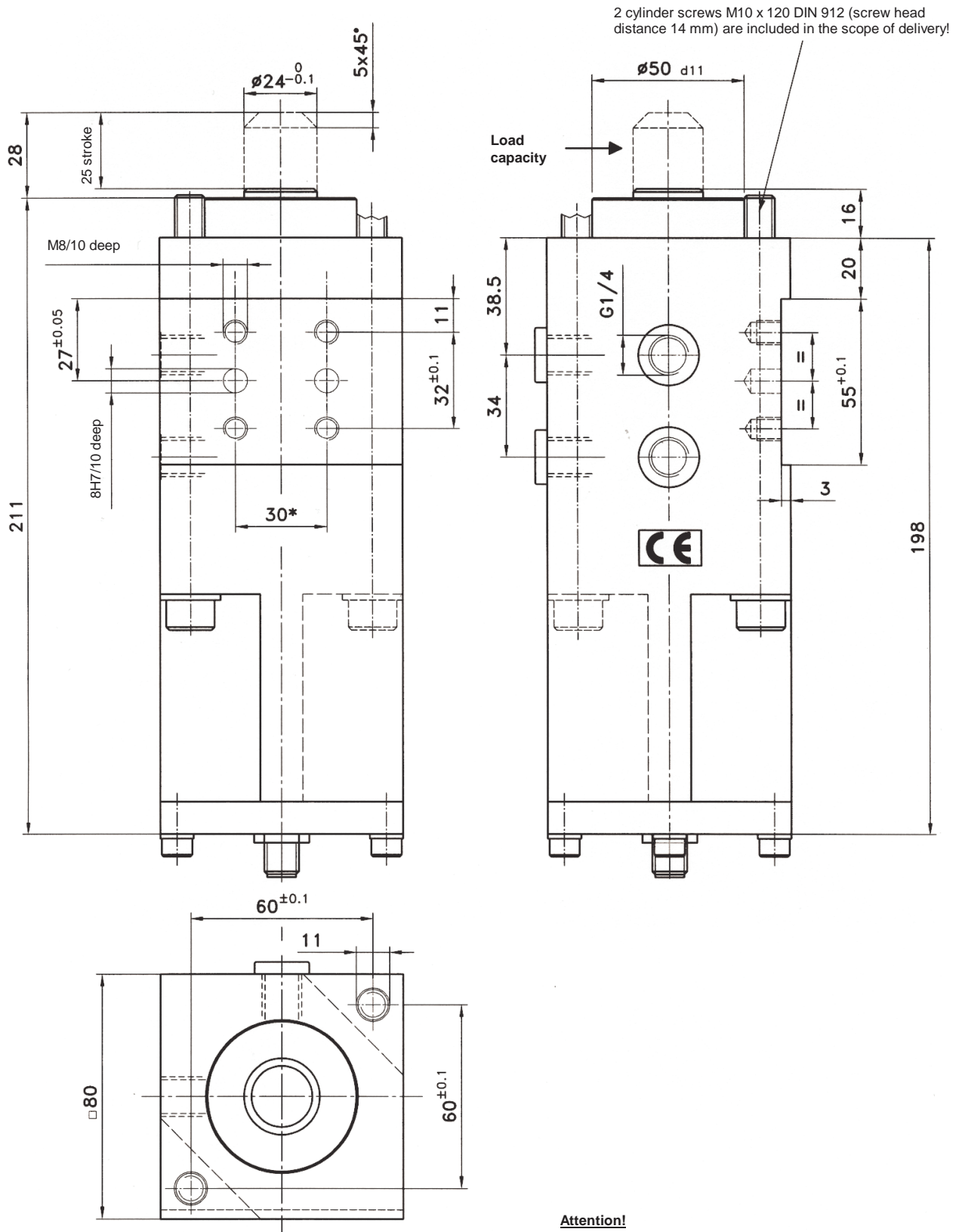


Shot pin

Pin for stroke or swivel operations

SA 50-25/25



Ordering example:

SA 50-25/25 T01

SA 50-25: Type
25: Stroke
T01: Sensing system

Ordering example Tünkers sensing systems:

- ... T01 Sensing system with floating switch contacts according to general safety standards
- ... T02 Sensing system according to VW-guideline 39D 1673 with central power supply of both switches
- ... T12 Inductive sensor 24 V, 1 output with integrated LED's (no safety switch)

Attention!

The shot pin may only be operated in unloaded position.

Static load capacity: approx. 700 - 1000 kg

Colour: Red, RAL 3000

Weight: 3.2 kg

*Tolerance for dowel holes ± 0.02 , for threaded holes ± 0.1 .

Medium: Air, max. 6 bar, operation permitted with oil-free air.

