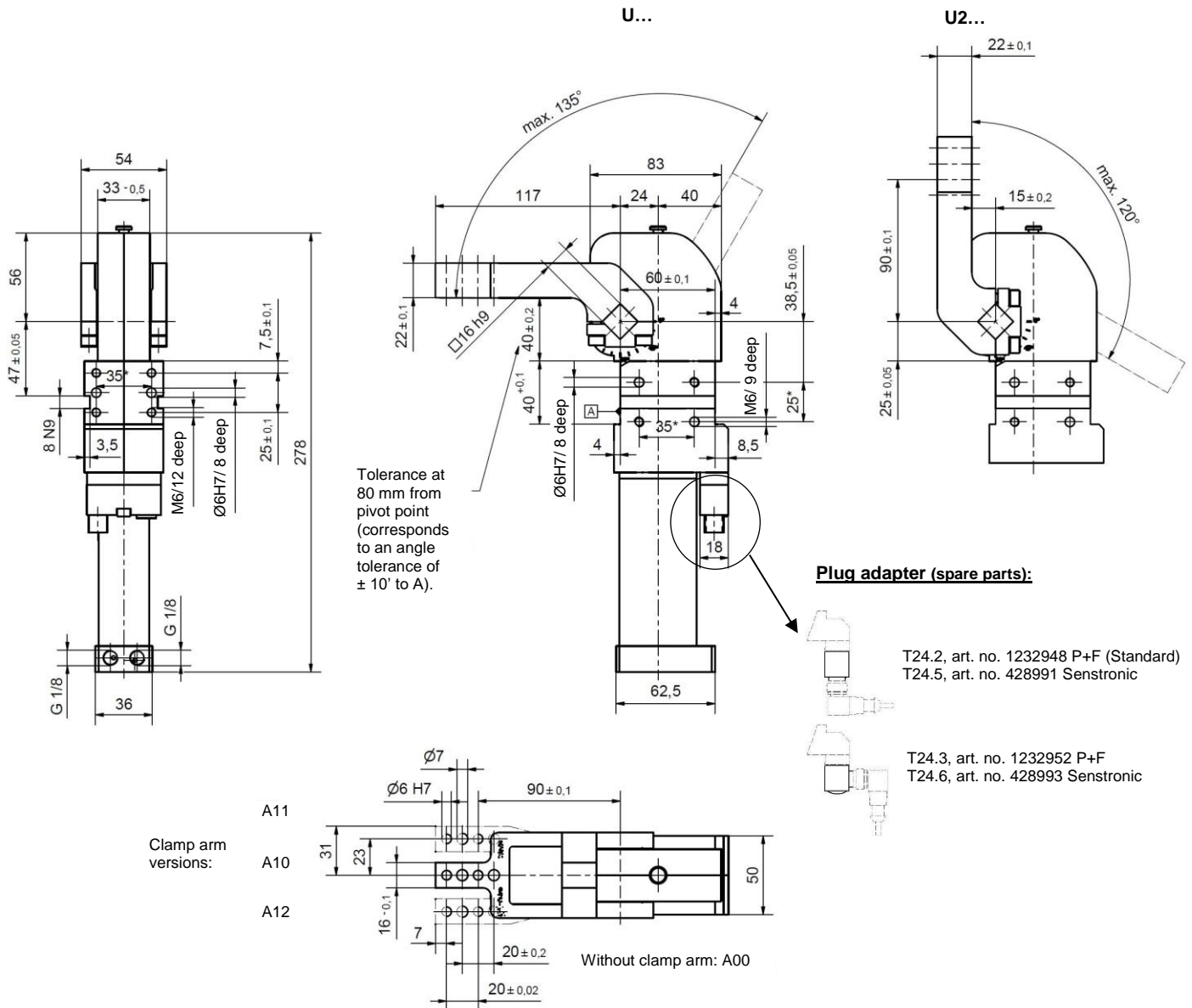


Universal Clamp

Stepless adjustable opening angle,
ca. 30% reduced air consumption with an unchanged clamping force

U/U2 40 BR5
5° - 135°

Patented



Ordering example:

U 40 BR5 W A10 T24.2

U 40 BR5: Type
W: On request: Housing coating
resistant to welding beads
A10: Clamp arm version
T24.2: Sensing system (standard)

Opening angle:

Stepless adjustable in the range of
5° to 135° (type U...).

On request:

Housing coating resistant to welding
beads.

*Tolerance for dowel holes ± 0.02 , for threaded holes
 ± 0.1 .

Medium: Air, max. 6 bar, operation permitted with oil-free
air.

Attention:

External throttle check valves must be provided on
assembly. They are not included in the scope of delivery!

Ordering example Tünkens sensing systems, two-piece:

...T24.1/4 Without plug adapter
...T24.2/5 With straight plug adapter (standard)
...T24.3/6 With plug adapter 90° angle

Plug adapter for inductive sensor 24 V,
with integrated LED's, sensor plug M12x1

Type	Holding torque max.	Clamping moment at 5 bar	Piston Ø	Weight ~ (kg)
U/U2 40	380 Nm	120 Nm	32	2.0